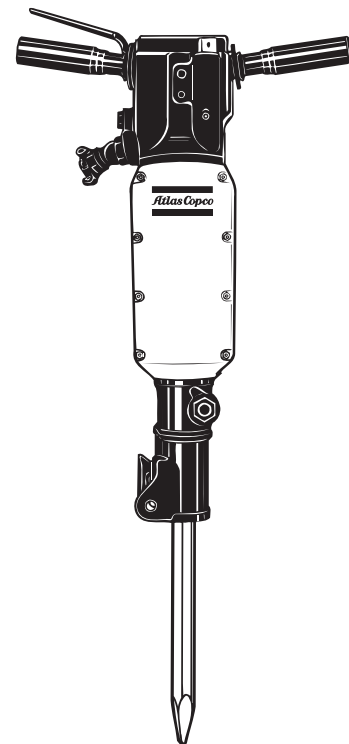


## Spare parts list

### Handheld pneumatic breakers



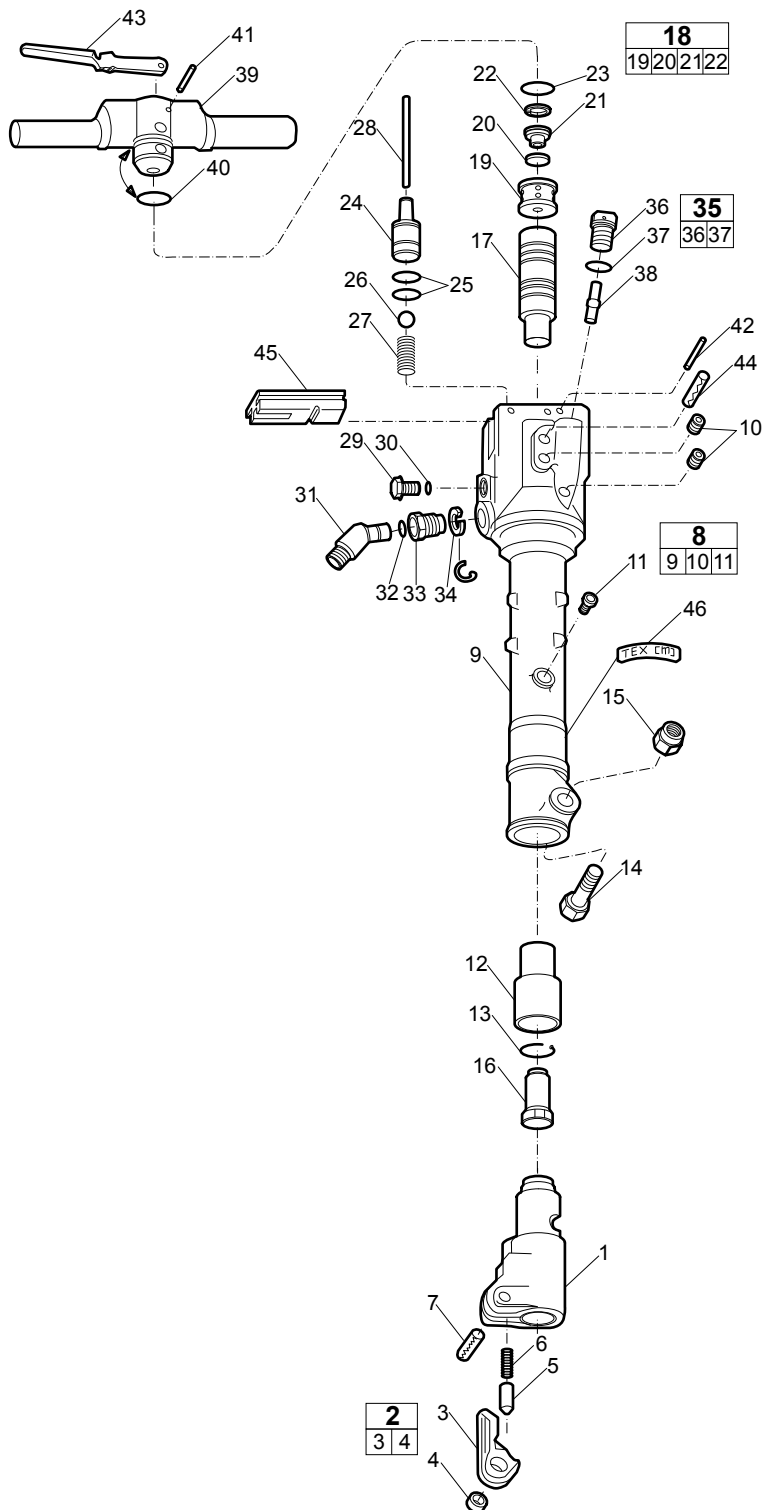


# Contents

<b>Spare parts list</b> .....	4
TEX 32P hexagon 28 x 160 .....	4
TEX 32P hexagon 32 x 160 .....	6
TEX 32PS hexagon 28 x 160 .....	8
TEX 32PS hexagon 32 x 160 .....	10
TEX 33PE hexagon 28 x 160 .....	12
TEX 33PE hexagon 32 x 160 .....	16
<b>Working tools</b> .....	19
ISO standard hexagon 28 x 160 mm (1 1/8" x 6 1/4") .....	19
ISO standard hexagon 32 x 160 mm (1 1/4" x 6 1/4") .....	20
US standard hexagon 1 1/8" x 6" (28 x 152 mm) .....	20
US standard hexagon 1 1/4" x 6" (32 x 152 mm) .....	21
<b>Accessories</b> .....	22
Claw couplings .....	22
Breaker and hammer AIR-OIL .....	23
Shank gauge .....	23

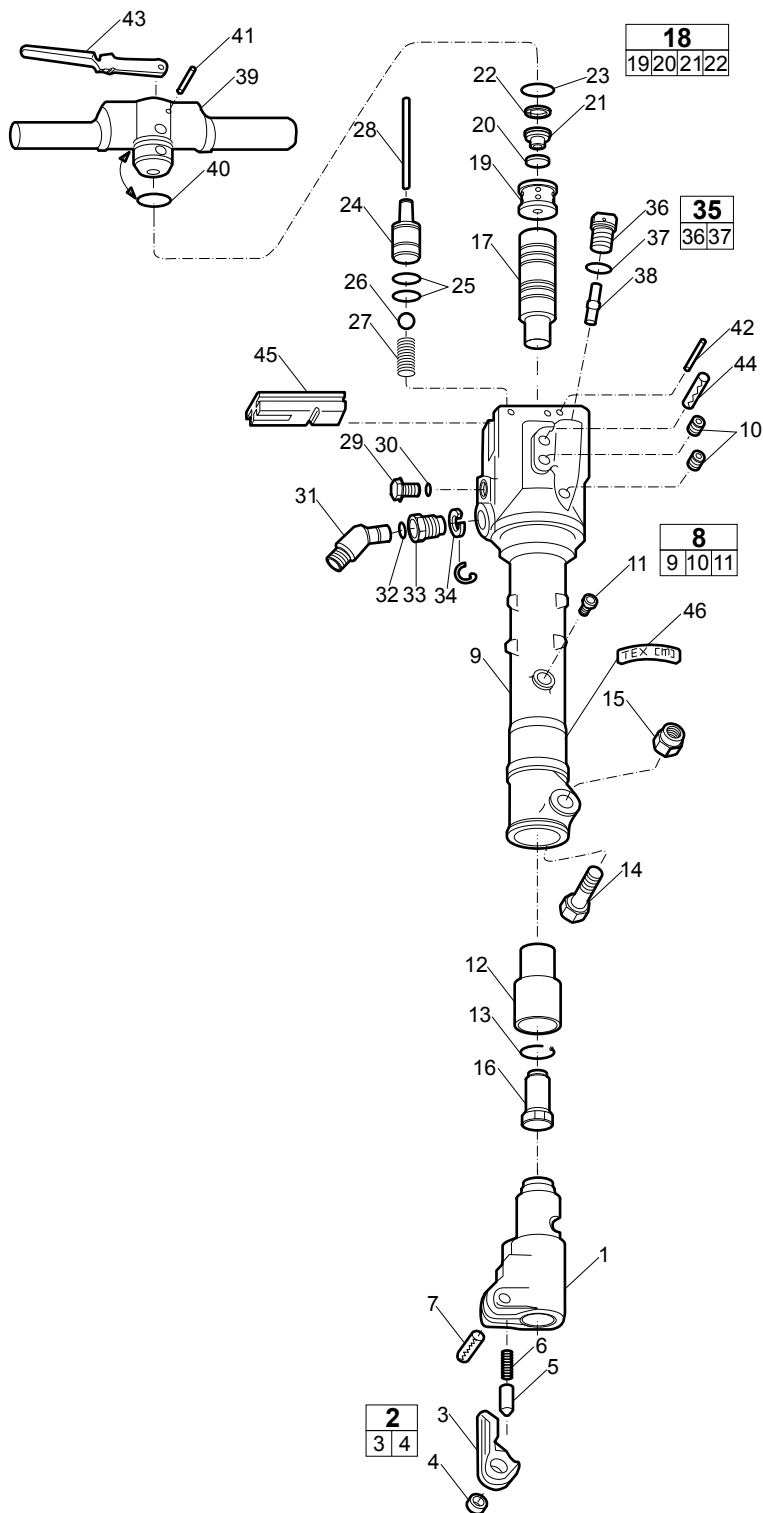
# Spare parts list

## TEX 32P hexagon 28 x 160



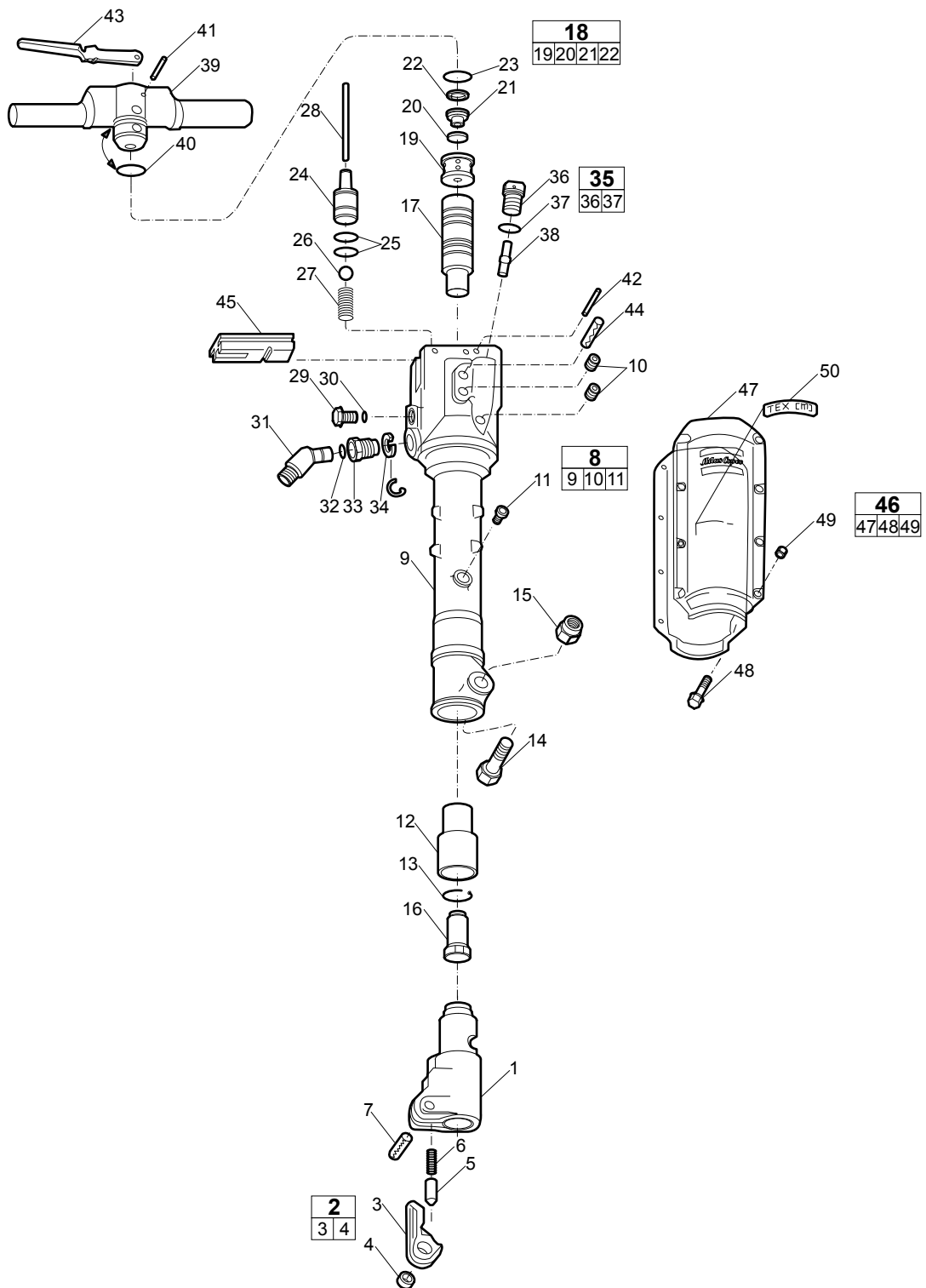
No.	Description	Remark	Quantity	Part number
1	Front head	Hexagon 28 x 160 mm	1	3310 1040 01
<b>2(3-4)</b>	<b>Tool retainer, complete</b>		1	3310 0889 80
3	Tool retainer		1	-
4	Bushing		1	3310 0892 00
5	Plunger		1	3310 0893 00
6	Spring		1	3310 0894 00
7	Connex pin	ø18 x 80 mm	1	0108 1691 06
<b>8(9-11)</b>	<b>Cylinder, complete</b>		1	3310 1116 00
9	Cylinder		1	-
10	Screw plug	ISO 7-R¼	2	0686 6102 00
11	Screw plug	ISO 7-R¾	1	0686 6103 00
12	Intermediate part		1	3310 1118 00
13	Lock ring		1	3310 1053 00
14	Bolt	MJ20 x 100 mm	1	3310 1175 00
15	Nut	M20 Nyloc	1	0291 1116 00
16	Anvil		1	3310 1203 00
17	Piston		1	3310 1198 00
<b>18(19-22)</b>	<b>Valve system, complete</b>	Red ø55 mm	1	3310 1169 90
19	Valve housing		1	-
20	Main valve		1	3310 1173 00
21	Valve cover		1	3310 1163 00
22	Steel washer	ø55 mm	1	3310 1166 00
23	O-ring	ø43.82 x 5.33 mm	1	0663 9253 00
24	Valve seat		1	3310 1038 00
25	O-ring	ø31.6 x 1.2 mm	2	0663 2105 44
26	Ball	Red ø20 mm	1	3310 0983 00
27	Spring		1	3310 1079 00
28	Valve stem		1	3310 1039 00
29	Screw plug		1	3310 1042 00
30	O-ring	ø9.3 x 2.4 mm	1	0663 2116 00
31	Swivel	¾ - 14NPT	1	3310 1043 01
32	O-ring	ø22.2 x 3.0 mm	1	0663 2126 00
33	Swivel nut		1	3310 1044 00
34	Lock washer		1	3310 1059 00
<b>35(36-37)</b>	<b>Oil plug, complete</b>		1	3310 1538 80
36	Oil plug		1	-
37	O-ring	ø22.2 x 3.0 mm	1	0663 2126 00
38	Dosing feeder		1	3310 1295 00
39	Handle		1	3310 1045 00
40	O-ring	ø49.5 x 3.0 mm	1	0663 6134 00
41	Pin	ø6 x 25 mm	1	0102 0320 00
42	Spring pin	ø6 x 32 mm	1	0108 1330 00
43	Trigger		1	3310 1046 00
44	Connex pin	ø16 x 100 mm	1	0108 1690 67
45	Cover		1	3310 1047 00
46	Plate	TEX 32P	1	3310 1120 00

# TEX 32P hexagon 32 x 160



No.	Description	Remark	Quantity	Part number
1	Front head	Hexagon 32 x 160 mm	1	3310 1040 00
<b>2(3-4)</b>	<b>Tool retainer, complete</b>		1	3310 0889 80
3	Tool retainer		1	-
4	Bushing		1	3310 0892 00
5	Plunger		1	3310 0893 00
6	Spring		1	3310 0894 00
7	Connex pin	ø18 x 80 mm	1	0108 1691 06
<b>8(9-11)</b>	<b>Cylinder, complete</b>		1	3310 1116 00
9	Cylinder		1	-
10	Screw plug	ISO 7-R¼	2	0686 6102 00
11	Screw plug	ISO 7-R¾	1	0686 6103 00
12	Intermediate part		1	3310 1118 00
13	Lock ring		1	3310 1053 00
14	Bolt	MJ20 x 100 mm	1	3310 1175 00
15	Nut	M20 Nyloc	1	0291 1116 00
16	Anvil		1	3310 1203 00
17	Piston		1	3310 1198 00
<b>18(19-22)</b>	<b>Valve system, complete</b>	Red ø55 mm	1	3310 1169 90
19	Valve housing		1	-
20	Main valve		1	3310 1173 00
21	Valve cover		1	3310 1163 00
22	Steel washer	ø55 mm	1	3310 1166 00
23	O-ring	ø43.82 x 5.33 mm	1	0663 9253 00
24	Valve seat		1	3310 1038 00
25	O-ring	ø31.6 x 1.2 mm	2	0663 2105 44
26	Ball	Red ø20 mm	1	3310 0983 00
27	Spring		1	3310 1079 00
28	Valve stem		1	3310 1039 00
29	Screw plug		1	3310 1042 00
30	O-ring	ø9.3 x 2.4 mm	1	0663 2116 00
31	Swivel	¾ - 14NPT	1	3310 1043 01
32	O-ring	ø22.2 x 3.0 mm	1	0663 2126 00
33	Swivel nut		1	3310 1044 00
34	Lock washer		1	3310 1059 00
<b>35(36-37)</b>	<b>Oil plug, complete</b>		1	3310 1538 80
36	Oil plug		1	-
37	O-ring	ø22.2 x 3.0 mm	1	0663 2126 00
38	Dosing feeder		1	3310 1295 00
39	Handle		1	3310 1045 00
40	O-ring	ø49.5 x 3.0 mm	1	0663 6134 00
41	Pin	ø6 x 25 mm	1	0102 0320 00
42	Spring pin	ø6 x 32 mm	1	0108 1330 00
43	Trigger		1	3310 1046 00
44	Connex pin	ø16 x 100 mm	1	0108 1690 67
45	Cover		1	3310 1047 00
46	Plate	TEX 32P	1	3310 1120 00

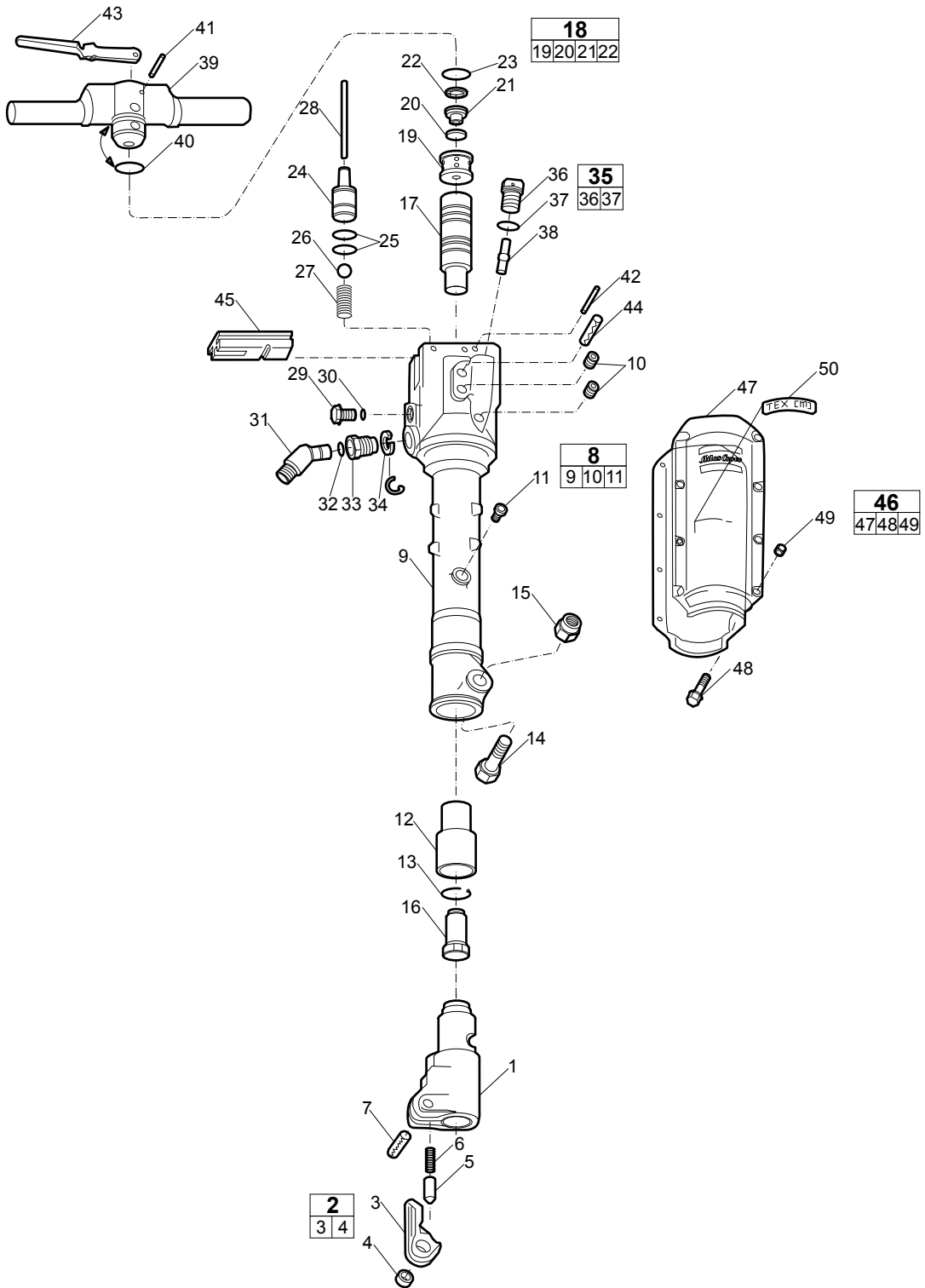
# TEX 32PS hexagon 28 x 160





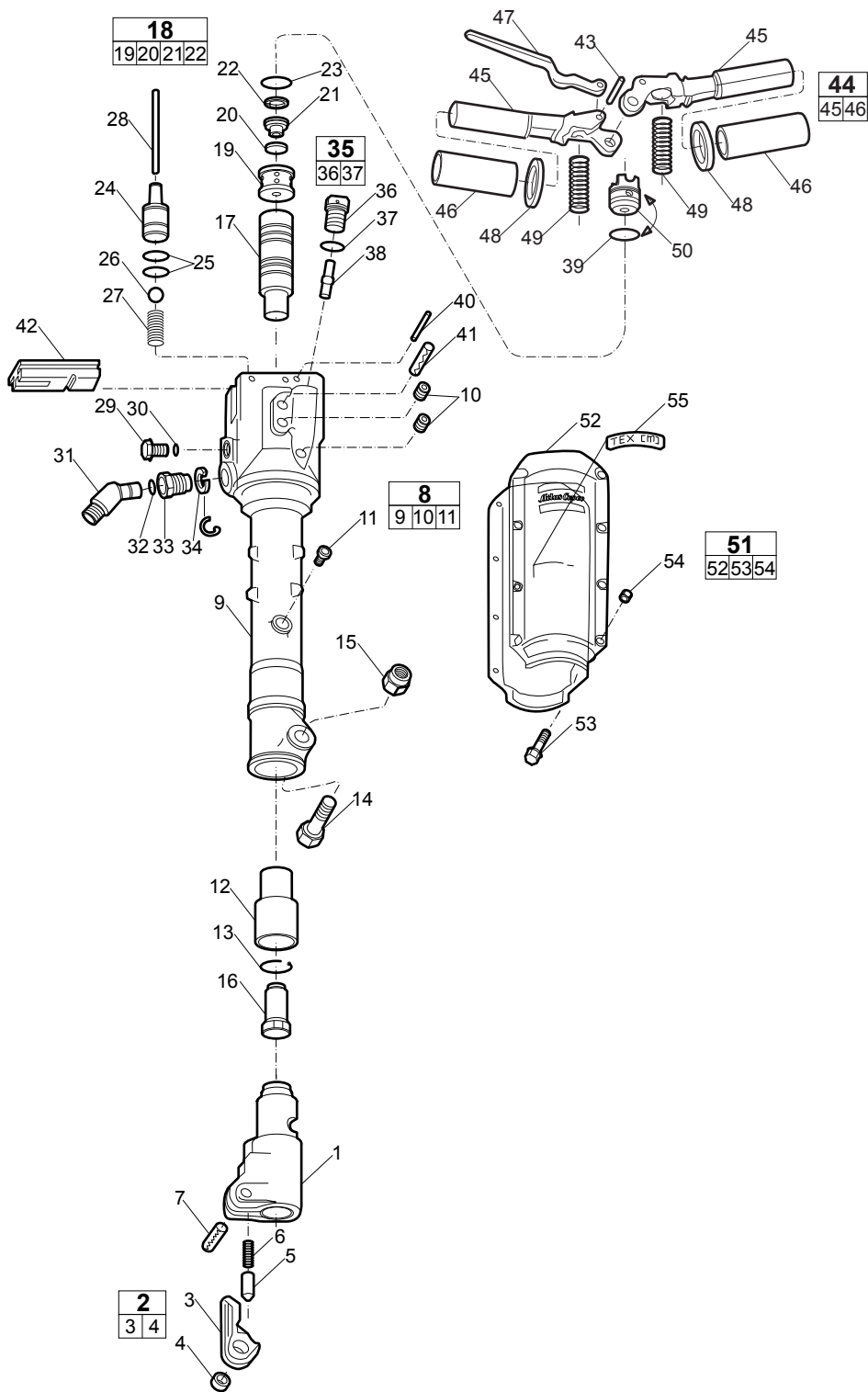
No.	Description	Remark	Quantity	Part number
1	Front head	Hexagon 28 x 160 mm	1	3310 1040 01
<b>2(3-4)</b>	<b>Tool retainer, complete</b>		1	3310 0889 80
3	Tool retainer		1	-
4	Bushing		1	3310 0892 00
5	Plunger		1	3310 0893 00
6	Spring		1	3310 0894 00
7	Connex pin	ø18 x 80 mm	1	0108 1691 06
<b>8(9-11)</b>	<b>Cylinder, complete</b>		1	3310 1116 00
9	Cylinder		1	-
10	Screw plug	ISO 7-R¼	2	0686 6102 00
11	Screw plug	ISO 7-R¾	1	0686 6103 00
12	Intermediate part		1	3310 1118 00
13	Lock ring		1	3310 1053 00
14	Bolt	MJ20 x 100 mm	1	3310 1175 00
15	Nut	M20 Nyloc	1	0291 1116 00
16	Anvil		1	3310 1203 00
17	Piston		1	3310 1198 00
<b>18(19-22)</b>	<b>Valve system, complete</b>	Red ø55 mm	1	3310 1169 90
19	Valve housing		1	-
20	Main valve		1	3310 1173 00
21	Valve cover		1	3310 1163 00
22	Steel washer	ø55 mm	1	3310 1166 00
23	O-ring	ø43.82 x 5.33 mm	1	0663 9253 00
24	Valve seat		1	3310 1038 00
25	O-ring	ø31.6 x 1.2 mm	2	0663 2105 44
26	Ball	Red ø20 mm	1	3310 0983 00
27	Spring		1	3310 1079 00
28	Valve stem		1	3310 1039 00
29	Screw plug		1	3310 1042 00
30	O-ring	ø9.3 x 2.4 mm	1	0663 2116 00
31	Swivel	¼ - 14NPT	1	3310 1043 01
32	O-ring	ø22.2 x 3.0 mm	1	0663 2126 00
33	Swivel nut		1	3310 1044 00
34	Lock washer		1	3310 1059 00
<b>35(36-37)</b>	<b>Oil plug, complete</b>		1	3310 1538 80
36	Oil plug		1	-
37	O-ring	ø22.2 x 3.0 mm	1	0663 2126 00
38	Dosing feeder		1	3310 1295 00
39	Handle		1	3310 1045 00
40	O-ring	ø49.5 x 3.0 mm	1	0663 6134 00
41	Pin	ø6 x 25 mm	1	0102 0320 00
42	Spring pin	ø6 x 32 mm	1	0108 1330 00
43	Trigger		1	3310 1046 00
44	Connex pin	ø16 x 100 mm	1	0108 1690 67
45	Cover		1	3310 1047 00
<b>46(47-49)</b>	<b>Silencer, complete</b>		1	3310 1229 80
47	Silencer		1	-
48	Flange screw		8	0147 3000 32
49	Flange nut	M6 Triloc	8	9232 0207 50
50	Plate	TEX 32PS	1	3310 1120 01

# TEX 32PS hexagon 32 x 160



No.	Description	Remark	Quantity	Part number
1	Front head	Hexagon 32 x 160 mm	1	3310 1040 00
<b>2(3-4)</b>	<b>Tool retainer, complete</b>		1	3310 0889 80
3	Tool retainer		1	-
4	Bushing		1	3310 0892 00
5	Plunger		1	3310 0893 00
6	Spring		1	3310 0894 00
7	Connex pin	ø18 x 80 mm	1	0108 1691 06
<b>8(9-11)</b>	<b>Cylinder, complete</b>		1	3310 1116 00
9	Cylinder		1	-
10	Screw plug	ISO 7-R¼	2	0686 6102 00
11	Screw plug	ISO 7-R¾	1	0686 6103 00
12	Intermediate part		1	3310 1118 00
13	Lock ring		1	3310 1053 00
14	Bolt	MJ20 x 100 mm	1	3310 1175 00
15	Nut	M20 Nyloc	1	0291 1116 00
16	Anvil		1	3310 1203 00
17	Piston		1	3310 1198 00
<b>18(19-22)</b>	<b>Valve system, complete</b>	Red ø55 mm	1	3310 1169 90
19	Valve housing		1	-
20	Main valve		1	3310 1173 00
21	Valve cover		1	3310 1163 00
22	Steel washer	ø55 mm	1	3310 1166 00
23	O-ring	ø43.82 x 5.33 mm	1	0663 9253 00
24	Valve seat		1	3310 1038 00
25	O-ring	ø31.6 x 1.2 mm	2	0663 2105 44
26	Ball	Red ø20 mm	1	3310 0983 00
27	Spring		1	3310 1079 00
28	Valve stem		1	3310 1039 00
29	Screw plug		1	3310 1042 00
30	O-ring	ø9.3 x 2.4 mm	1	0663 2116 00
31	Swivel	¼ - 14NPT	1	3310 1043 01
32	O-ring	ø22.2 x 3.0 mm	1	0663 2126 00
33	Swivel nut		1	3310 1044 00
34	Lock washer		1	3310 1059 00
<b>35(36-37)</b>	<b>Oil plug, complete</b>		1	3310 1538 80
36	Oil plug		1	-
37	O-ring	ø22.2 x 3.0 mm	1	0663 2126 00
38	Dosing feeder		1	3310 1295 00
39	Handle		1	3310 1045 00
40	O-ring	ø49.5 x 3.0 mm	1	0663 6134 00
41	Pin	ø6 x 25 mm	1	0102 0320 00
42	Spring pin	ø6 x 32 mm	1	0108 1330 00
43	Trigger		1	3310 1046 00
44	Connex pin	ø16 x 100 mm	1	0108 1690 67
45	Cover		1	3310 1047 00
<b>46(47-49)</b>	<b>Silencer, complete</b>		1	3310 1229 80
47	Silencer		1	-
48	Flange screw		8	0147 3000 32
49	Flange nut	M6 Triloc	8	9232 0207 50
50	Plate	TEX 32PS	1	3310 1120 01

# TEX 33PE hexagon 28 x 160

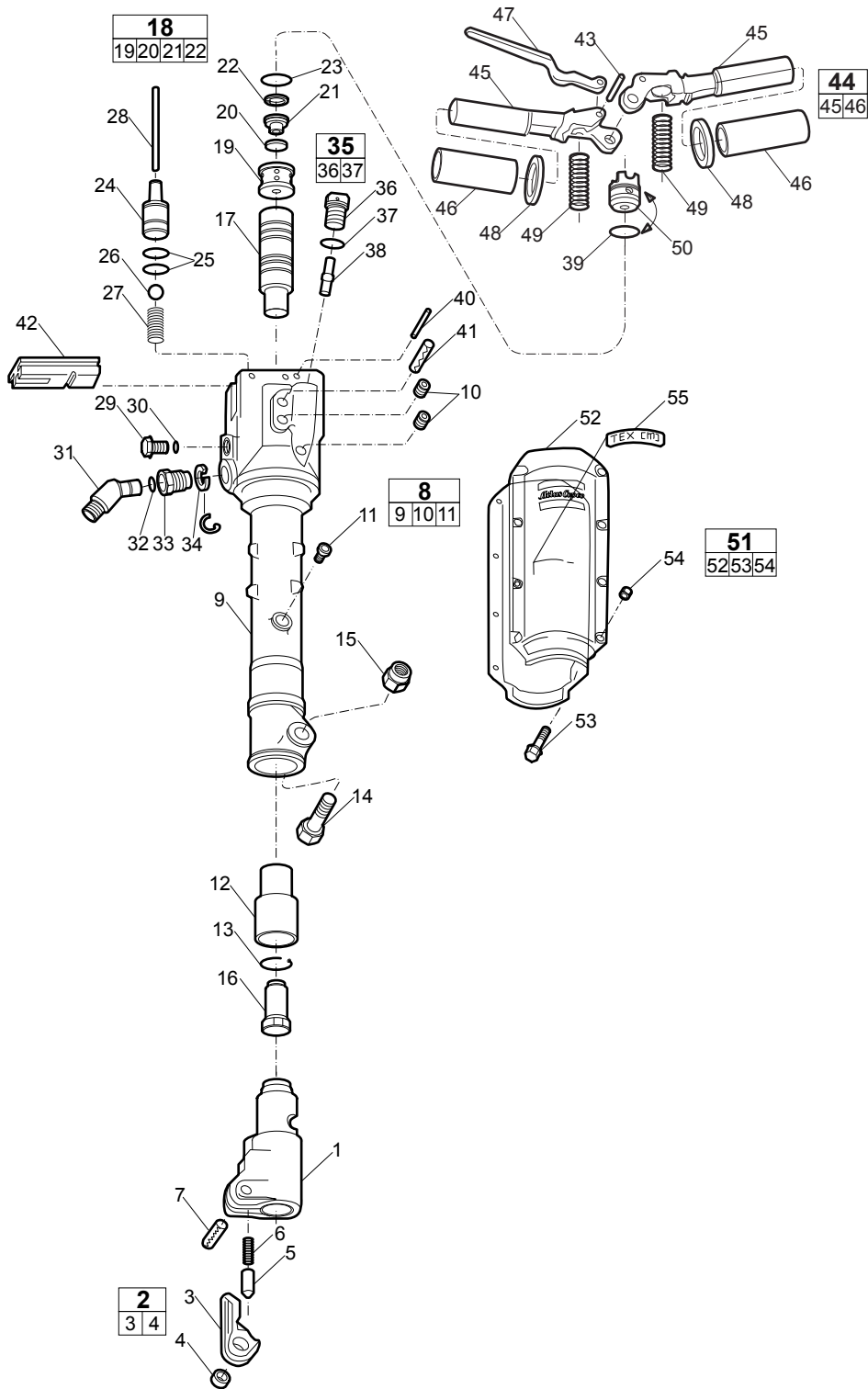


No.	Description	Remark	Quantity	Part number
1	Front head	Hexagon 28 x 160 mm	1	3310 1040 01
<b>2(3-4)</b>	<b>Tool retainer, complete</b>		1	3310 0889 80
3	Tool retainer		1	-
4	Bushing		1	3310 0892 00
5	Plunger		1	3310 0893 00
6	Spring		1	3310 0894 00
7	Connex pin	ø18 x 80 mm	1	0108 1691 06
<b>8(9-11)</b>	<b>Cylinder, complete</b>		1	3310 1116 00
9	Cylinder		1	-
10	Screw plug	ISO 7-R¼	2	0686 6102 00
11	Screw plug	ISO 7-R¾	1	0686 6103 00
12	Intermediate part		1	3310 1118 00
13	Lock ring		1	3310 1053 00
14	Bolt	MJ20 x 100 mm	1	3310 1175 00
15	Nut	M20 Nyloc	1	0291 1116 00
16	Anvil		1	3310 1203 00
17	Piston		1	3310 1198 00
<b>18(19-22)</b>	<b>Valve system, complete</b>	Red ø55 mm	1	3310 1169 90
19	Valve housing		1	-
20	Main valve		1	3310 1173 00
21	Valve cover		1	3310 1163 00
22	Steel washer	Red ø55 mm	1	3310 1166 00
23	O-ring	ø43.82 x 5.33 mm	1	0663 9253 00
24	Valve seat		1	3310 1038 00
25	O-ring	ø31.6 x 1.2 mm	2	0663 2105 44
26	Ball	Red ø20 mm	1	3310 0983 00
27	Spring		1	3310 1079 00
28	Valve stem		1	3310 1039 00
29	Screw plug		1	3310 1042 00
30	O-ring	ø9.3 x 2.4 mm	1	0663 2116 00
31	Swivel	¼ - 14NPT	1	3310 1043 01
32	O-ring	ø22.2 x 3.0 mm	1	0663 2126 00
33	Swivel nut		1	3310 1044 00
34	Lock washer		1	3310 1059 00
<b>35(36-37)</b>	<b>Oil plug, complete</b>		1	3310 1538 80
36	Oil plug		1	-
37	O-ring	ø22.2 x 3.0 mm	1	0663 2126 00
38	Dosing feeder		1	3310 1295 00
39	O-ring	ø49.5 x 3.0 mm	1	0663 6134 00
40	Spring pin	ø6 x 25 mm	1	0108 1330 00
41	Connex pin	ø6 x 32 mm	1	0108 1690 67
42	Cover		1	3310 1047 00
43	Spring pin	ø6 x 25 mm	1	0108 1330 00
<b>44(45-46)</b>	<b>Handle, complete</b>		1	3310 1105 80
45	Handle		2	-
46	Sleeve		2	3310 1132 00
47	Trigger		1	3310 1082 00
48	Rubber washer		2	3310 1085 00
49	Spring		2	3310 1107 00
50	Seal plug		1	3310 1160 00

No.	Description	Remark	Quantity	Part number
51(52-54)	Silencer, complete		1	3310 1229 80
52	Silencer		1	-
53	Flange screw		8	0147 3000 32
54	Flange nut	M6 Triloc	8	9232 0207 50
55	Plate	TEX 33PE	1	3310 1120 02



# TEX 33PE hexagon 32 x 160

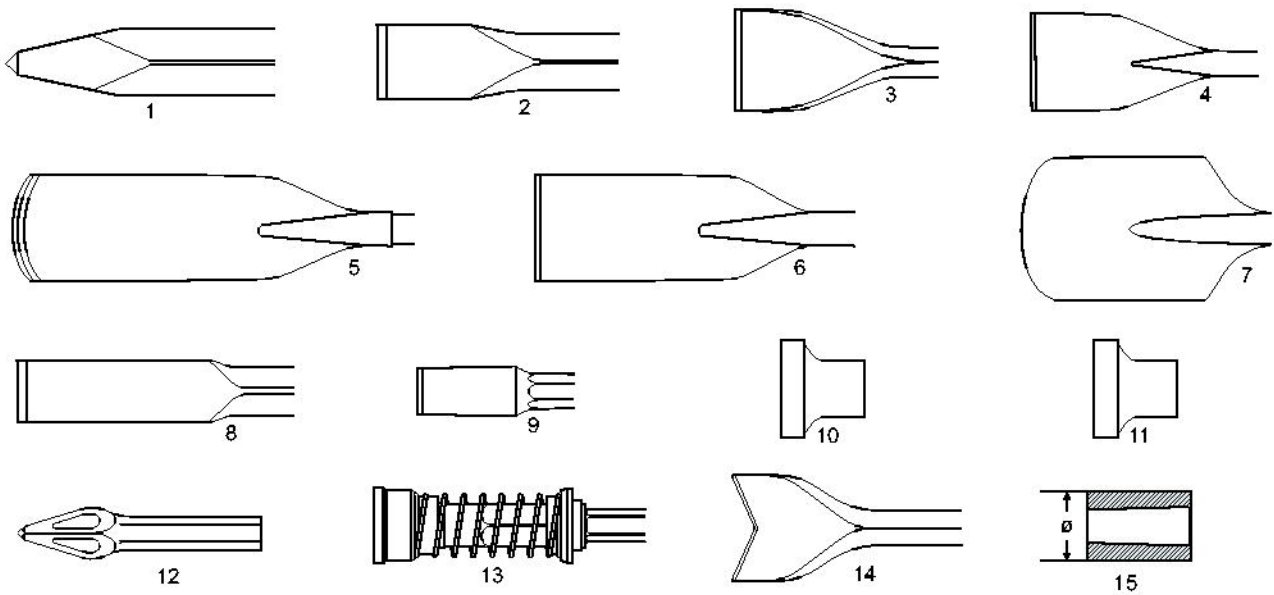




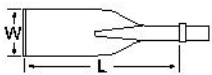
No.	Description	Remark	Quantity	Part number
1	Front head	Hexagon 32 x 160 mm	1	3310 1040 00
<b>2(3-4)</b>	<b>Tool retainer, complete</b>		1	3310 0889 80
3	Tool retainer		1	-
4	Bushing		1	3310 0892 00
5	Plunger		1	3310 0893 00
6	Spring		1	3310 0894 00
7	Connex pin	ø18 x 80 mm	1	0108 1691 06
<b>8(9-11)</b>	<b>Cylinder, complete</b>		1	3310 1116 00
9	Cylinder		1	-
10	Screw plug	ISO 7-R¼	2	0686 6102 00
11	Screw plug	ISO 7-R¾	1	0686 6103 00
12	Intermediate part		1	3310 1118 00
13	Lock ring		1	3310 1053 00
14	Bolt	MJ20 x 100 mm	1	3310 1175 00
15	Nut	M20 Nyloc	1	0291 1116 00
16	Anvil		1	3310 1203 00
17	Piston		1	3310 1198 00
<b>18(19-22)</b>	<b>Valve system, complete</b>	Red ø55 mm	1	3310 1169 90
19	Valve housing		1	-
20	Main valve		1	3310 1173 00
21	Valve cover		1	3310 1163 00
22	Steel washer	Red ø55 mm	1	3310 1166 00
23	O-ring	ø43.82 x 5.33 mm	1	0663 9253 00
24	Valve seat		1	3310 1038 00
25	O-ring	ø31.6 x 1.2 mm	2	0663 2105 44
26	Ball	Red ø20 mm	1	3310 0983 00
27	Spring		1	3310 1079 00
28	Valve stem		1	3310 1039 00
29	Screw plug		1	3310 1042 00
30	O-ring	ø9.3 x 2.4 mm	1	0663 2116 00
31	Swivel	¾ - 14NPT	1	3310 1043 01
32	O-ring	ø22.2 x 3.0 mm	1	0663 2126 00
33	Swivel nut		1	3310 1044 00
34	Lock washer		1	3310 1059 00
<b>35(36-37)</b>	<b>Oil plug, complete</b>		1	3310 1538 80
36	Oil plug		1	-
37	O-ring	ø22.2 x 3.0 mm	1	0663 2126 00
38	Dosing feeder		1	3310 1295 00
39	O-ring	ø49.5 x 3.0 mm	1	0663 6134 00
40	Spring pin	ø6 x 25 mm	1	0108 1330 00
41	Connex pin	ø6 x 32 mm	1	0108 1690 67
42	Cover		1	3310 1047 00
43	Spring pin	ø6 x 25 mm	1	0108 1330 00
<b>44(45-46)</b>	<b>Handle, complete</b>		1	3310 1105 80
45	Handle		2	-
46	Sleeve		2	3310 1132 00
47	Trigger		1	3310 1082 00
48	Rubber washer		2	3310 1085 00
49	Spring		2	3310 1107 00
50	Seal plug		1	3310 1160 00

No.	Description	Remark	Quantity	Part number
51(52-54)	Silencer, complete		1	3310 1229 80
52	Silencer		1	-
53	Flange screw		8	0147 3000 32
54	Flange nut	M6 Triloc	8	9232 0207 50
55	Plate	TEX 33PE	1	3310 1120 02

# Working tools

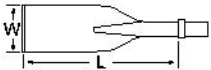


## ISO standard hexagon 28 x 160 mm (1 1/8" x 6 1/4")



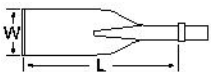
No.	Description	W (mm)	L (mm)	Part number
1	Moil point	-	380	3083 3271 00
		-	450	3083 3272 00
		-	1000	3083 3273 00
2	Narrow chisel	32	380	3083 3274 00
		32	450	3083 3275 00
		32	1000	3083 3276 00
3	Wide chisel	75	380	3083 3277 00
4	Asphalt cutter	115	300	3083 3278 00
5	Digging chisel	75	380	3083 3279 00
6	Digging spade	125	380	3083 3280 00
7	Clay spade	140	380	3083 3281 00
8	Wedge chisel	40	400	3083 3282 00
9	Shaft for tamping pad	-	230	3083 3283 01
10	Tamping pad, round	180	-	3083 3301 00
11	Tamping pad, square	150	-	3083 3302 00
		200	-	3083 3197 00
12	Heavy duty-buster	-	380	3083 3315 00
14	Tie tamper	100	400	3083 3319 00
15	Driver blank	80	-	9245 2827 10

## ISO standard hexagon 32 x 160 mm (1¼" x 6¼")



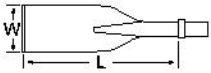
No.	Description	W (mm)	L (mm)	Part number
1	Moil point	-	380	3083 3205 00
		-	450	3083 3206 00
		-	1000	3083 3207 00
2	Narrow chisel	35	380	3083 3208 00
		35	450	3083 3209 00
		35	1000	3083 3210 00
3	Wide chisel	75	380	3083 3211 00
4	Asphalt cutter	115	300	3083 3212 00
5	Digging chisel	75	380	3083 3213 00
6	Digging spade	125	380	3083 3214 00
7	Clay spade	140	380	3083 3215 00
8	Wedge chisel	40	400	3083 3216 00
9	Shaft for tamping pad	-	235	3083 3218 01
10	Tamping pad, round	180	-	3083 3301 00
11	Tamping pad, square	150	-	3083 3302 00
		200	-	3083 3197 00
13	Spiking tool	-	195	9245 2826 81
14	Tie tamper	100	400	3083 3217 00
		100	580	3083 3217 10
15	Driver blank	80	-	9245 2827 10

## US standard hexagon 1⅛" x 6" (28 x 152 mm)



No.	Description	W (in.)	L (in.)	Part number
1	Moil point	-	14	3083 3267 00
		-	18	3083 4015 10
		-	36	3083 4015 20
2	Narrow chisel	1¼	14	3083 3268 00
		1¼	18	3083 4016 10
		1¼	36	3083 4016 20
3	Wide chisel	3	15	3083 3289 00
		3	18	3083 4017 00
4	Asphalt cutter	5	13	3083 3290 00
		4½	11	3083 4019 00
5	Digging chisel	3	15	3083 3291 00
6	Digging spade	5	15	3083 3292 00
7	Clay spade	5½	15	3083 3293 00
8	Wedge chisel	2	16	3083 3294 00
9	Shaft for tamping pad	-	9	3083 3269 00
10	Tamping pad, round	7	-	3083 3301 00
11	Tamping pad, square	6	-	3083 3302 00
		8	-	3083 3197 00
15	Driver blank	3	-	9245 2827 10

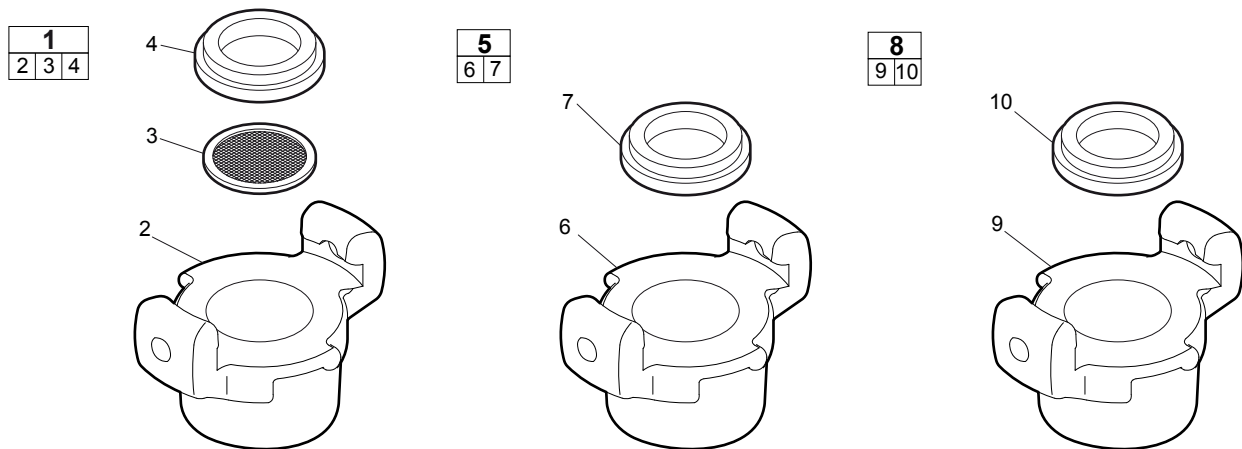
## US standard hexagon 1¼" x 6" (32 x 152 mm)



No.	Description	W (in.)	L (in.)	Part number
1	Moil point	-	14	3083 3285 00
		-	18	3083 4000 10
		-	36	3083 4000 20
2	Narrow chisel	1⅜	14	3083 3286 00
		1⅝	18	3083 4001 10
		1⅞	24	3083 4001 20
3	Wide chisel	3	15	3083 3295 00
		3	18	3083 4002 00
4	Asphalt cutter	5	13	3083 3296 00
		4½	12	3083 4004 00
5	Digging chisel	3	15	3083 3297 00
6	Digging spade	5	15	3083 3298 00
7	Clay spade	5½	15	3083 3299 00
8	Wedge chisel	2	16	3083 3300 00
9	Shaft for tamping pad	-	9	3083 3287 00
10	Tamping pad, round	7	-	3083 3301 00
11	Tamping pad, square	6	-	3083 3302 00
		8	-	3083 3197 00
14	Tie tamper	4	16	3083 3314 00
15	Driver blank	3	-	9245 2827 10

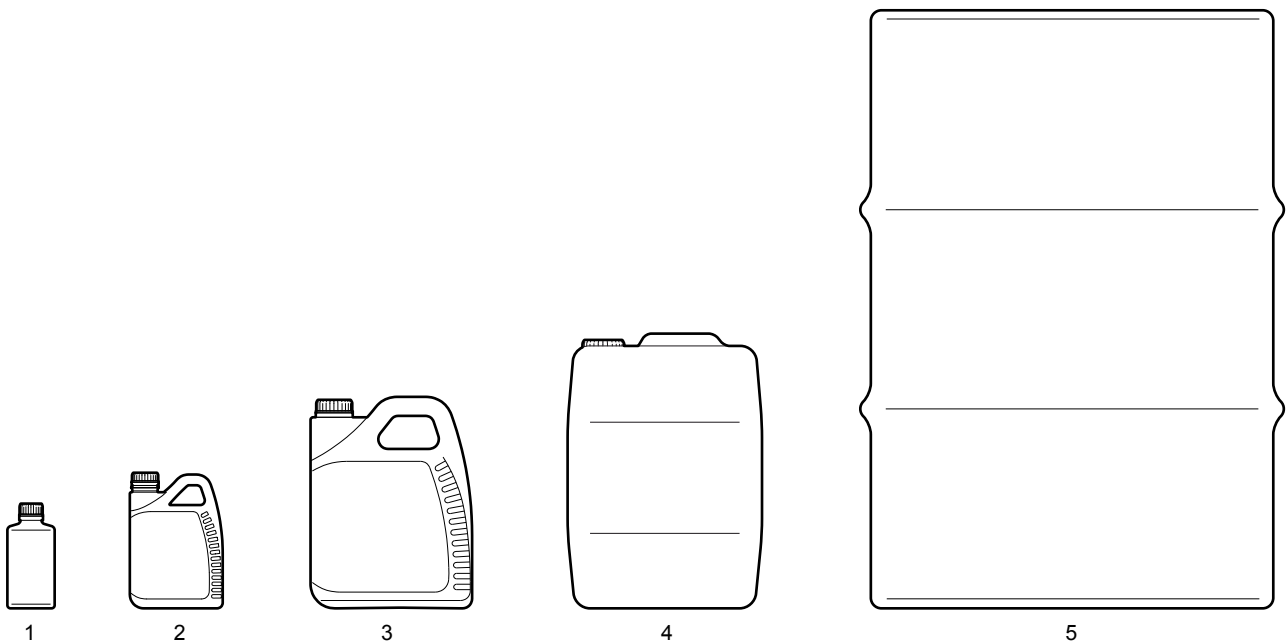
# Accessories

## Claw couplings



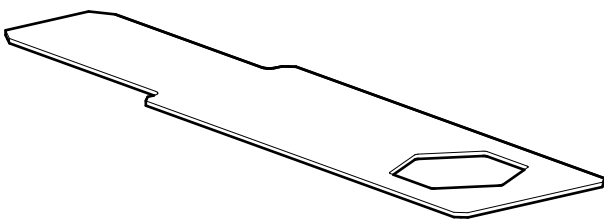
No.	Description	Remark	Quantity	Part number
<b>1(2-4)</b>	<b>Claw coupling with strainer, complete</b>	Standard G $\frac{3}{4}$ "	1	9000 0306 01
2	Claw coupling		1	-
3	Strainer		1	9000 0000 10
4	Seal		1	9000 0000 00
<b>5(6-7)</b>	<b>Claw coupling, complete</b>	Standard G $\frac{3}{4}$ "	1	9000 0306 00
6	Claw coupling		1	-
7	Seal		1	9000 0000 00
<b>8(9-10)</b>	<b>Claw coupling, complete</b>	US-universal $\frac{3}{4}$ "	1	9001 0005 06
9	Claw coupling		1	-
10	Seal		1	9001 0005 15

## Breaker and hammer AIR-OIL



No.	Description	Remark	Quantity	Part number
1	Breaker and hammer AIR-OIL	0.2 l (0.040 gallon)	1	8099 0202 40
2	Breaker and hammer AIR-OIL	1 l (0.22 gallon)	1	8099 0202 36
3	Breaker and hammer AIR-OIL	5 l (1.1 gallon)	1	8099 0202 02
4	Breaker and hammer AIR-OIL	20 l (4.4 gallon)	1	8099 0202 15
5	Breaker and hammer AIR-OIL	208 l Drum (46 gallon)	1	8099 0202 28

## Shank gauge



Description	Remark	Quantity	Part number
Gauge, hexagon 25	25 mm (1")	1	3310 1509 25
Gauge, hexagon 28	28 mm (1 1/8")	1	3310 1509 28
Gauge, hexagon 32	32 mm (1 1/4")	1	3310 1509 32











Any unauthorized use or copying of the contents or any part thereof is prohibited.  
This applies in particular to trademarks, model denominations, part numbers and drawings.

© 2009 Atlas Copco Construction Tools AB | No. 9800 0818 01a | 2009-06-25

**Atlas Copco**

[www.atlascopco.com](http://www.atlascopco.com)